

Memorandum

*Revised
com*

To: BWCD BOARD OF DIRECTORS
From: ERIC MANGEOT *EM*
CC: CHRIS GEIGER
Date: FEBRUARY 10, 2012
File: APPLICATION
Re: SWEETASPEN SUNNYSIDE, LLC

Applicant Name: SWEETASPEN SUNNYSIDE, LLC

Type of Use: Domestic X Commercial
Industrial Agricultural

Amount: 1.7 AF CFS gpm (Pond Evaporation Contract Only)

Location: Area A X Area B Inclusion X

County: PITKIN Contiguous: No

BWCD Division: 7

Mid Valley Metro District Notice Required? Yes No X

Blue Creek Water Rights Applied? Yes No X

(Per Bill B.)

Comments: This application seeks a water allotment contract to augment the water surface evaporation associated with a pond and associated water features (0.45 acres total). The pond is within a property located in the SE1/4 of Section 27, Township 9 South, Range 85 West, of the 6th P.M. The physical address of the property is 292 Sunnyside Lane in Aspen, Colorado.



The physical source of water for the pond is a lateral off of the ~~Salvation~~ *the WHITE HORSE SPRINGS FRESH* Ditch. If approved, the water allotment contract would reside in the District's Substitute Water Supply Plan (SWSP) until such time 02CW77 Umbrella Plan in the upper reach (Area A-3) is decreed. Once decreed, the contract will require subsequent review and approval to ensure that it meets Umbrella Plan requirements. Additional terms and conditions may apply.

A BWCD map is attached showing the location of the property and requires inclusion into District 7.

Water User :	SweetAspen Sunnyside, LLC
Analysis Date :	December 15, 2011
District Area:	A
Source Series:	4
Maximum Demand:	--- (GPM) (CFS)

**BASALT WATER CONSERVANCY DISTRICT
WATER REQUIREMENTS
(acre feet)
Contract 599**

Month	Total Demand				Consumptive Use				(12)* TOTAL	(13) Source of Aug/Replace			
	(1) Domestic In-house	(2) Pond Evaporation	(3) Lawn Irrigation	(4) Crop Irrigation	(5) Livestock	(6) TOTAL	(7) Domestic In-house	(8) Pond Evaporation			(9) Lawn Irrigation	(10) Crop Irrigation	(11) Livestock
January	0.000	0.015	0.000	0.000	0.000	0.015	0.000	0.015	0.000	0.000	0.000	0.017	GNM
February	0.000	0.045	0.000	0.000	0.000	0.045	0.000	0.045	0.000	0.000	0.000	0.050	GNM
March	0.000	0.090	0.000	0.000	0.000	0.090	0.000	0.090	0.000	0.000	0.000	0.099	GNM
April	0.000	0.135	0.000	0.000	0.000	0.135	0.000	0.135	0.000	0.000	0.000	0.149	GNM
May	0.000	0.188	0.000	0.000	0.000	0.188	0.000	0.188	0.000	0.000	0.000	0.206	GNM
June	0.000	0.233	0.000	0.000	0.000	0.233	0.000	0.233	0.000	0.000	0.000	0.256	GNM
July	0.000	0.240	0.000	0.000	0.000	0.240	0.000	0.240	0.000	0.000	0.000	0.264	GNM
August	0.000	0.195	0.000	0.000	0.000	0.195	0.000	0.195	0.000	0.000	0.000	0.215	GNM
September	0.000	0.165	0.000	0.000	0.000	0.165	0.000	0.165	0.000	0.000	0.000	0.182	GNM
October	0.000	0.113	0.000	0.000	0.000	0.113	0.000	0.113	0.000	0.000	0.000	0.124	GNM
November	0.000	0.060	0.000	0.000	0.000	0.060	0.000	0.060	0.000	0.000	0.000	0.066	GNM
December	0.000	0.023	0.000	0.000	0.000	0.023	0.000	0.023	0.000	0.000	0.000	0.025	GNM
TOTALS -->	0.000	1.500	0.000	0.000	0.000	1.500	0.000	1.500	0.000	0.000	0.000	1.650	

Assumptions		Area A-3	
(1)	(2)	(5)	(7)
NUMBER OF RESIDENCES	0	# of Livestock @ 11 gals/day	0
# persons/residence	3.5	% CU for Domestic/Commercial	15
# gallons/person/day	100	% Lawn Irrig. Efficiency	80
Commercial/Other Demand (af)	0.000	Consumption of Irrig. (af/ac)	0.000
Sq. Ft. of Lawn irrigated	0	% Crop Irrig. Efficiency	80
Lawn Application Rate (af/ac)	0.000	Consumption of Irrig. (af/ac)	0.000
Acres of Crop Irrigated	0.00	Elevation (feet)	7860
Crop Application Rate (af/ac)	0.000		

*(12) Total Includes 5% Transit Loss
10% from Green Mtn.

**Area A-3
Pond Evap. Only
No Delayed Depletions
Surface Diversion
Roaring Fork River**

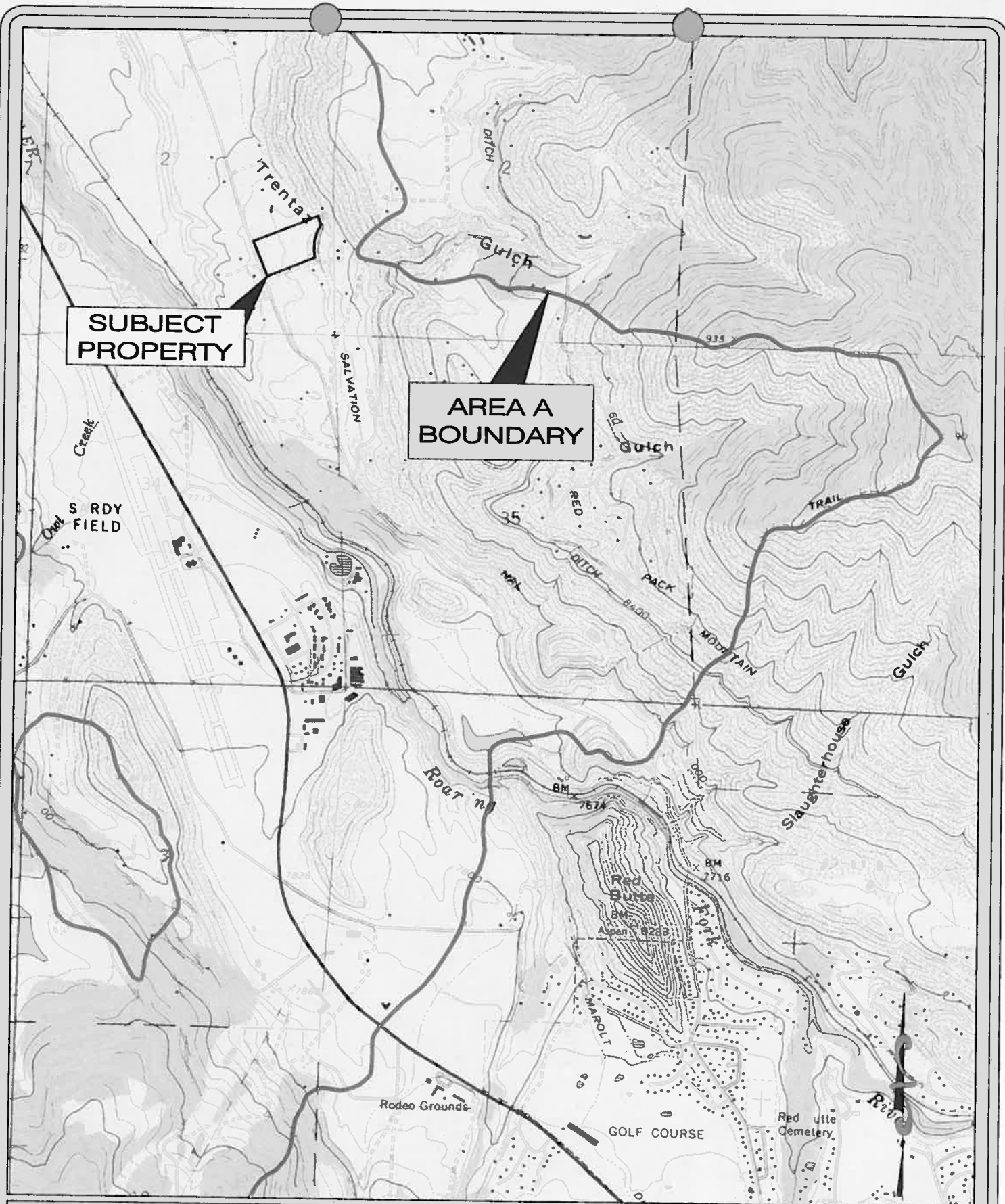
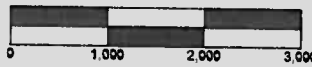


Figure 1: SweetAspen Sunnyside, LLC

Basalt Water Conservancy District

File: 033-7.2
Date: 12/13/11



Scale: 1"=2,000'

RESOURCE
ENGINEERING, INC.

909 Colorado Avenue
Glenwood Springs, CO 81601
(970) 945-6777 Voice 945-1137 Facsimile